

Canadian Bioinformatics Workshops

www.bioinformatics.ca

bioinformaticsdotca.github.io

This page is available in the following languages:
Afrikaans Azərbaycanca Català Dansk Deutsch Ελληνικά English English (CA) English (GB) English (US) Esperanto
Español Castellano (AR) Español (CL) Castellano (CO) Español (Ecuador) Castellano (MX) Castellano (PE)
Euskara Suomi français français (CA) Galego עברית hrvatski Magyar Italiano 日本語 한국어 Macedonian Melayu
Nederlands Norsk Sesotho sa Leboa polski Português română slovenski jezik српски jezik (latinica) Sotho svenska
中文 華語 (台灣) isiZulu



Attribution-Share Alike 2.5 Canada

You are free:



to **Share** — to copy, distribute and transmit the work



to **Remix** — to adapt the work



Under the following conditions:



Attribution. You must attribute the work in the manner specified by the author or licensor (but not in any way that suggests that they endorse you or your use of the work).



Share Alike. If you alter, transform, or build upon this work, you may distribute the resulting work only under the same or similar licence to this one.

- For any reuse or distribution, you must make clear to others the licence terms of this work.
- Any of the above conditions can be waived if you get permission from the copyright holder.
- The author's moral rights are retained in this licence.

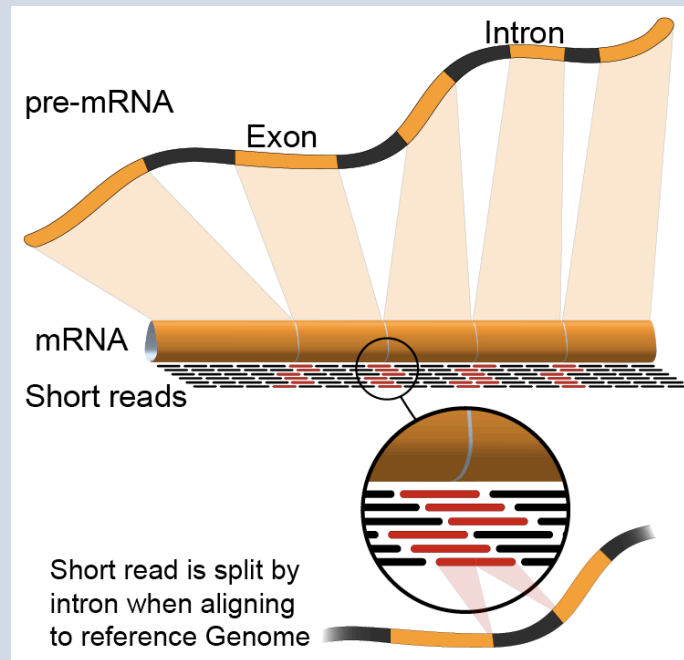
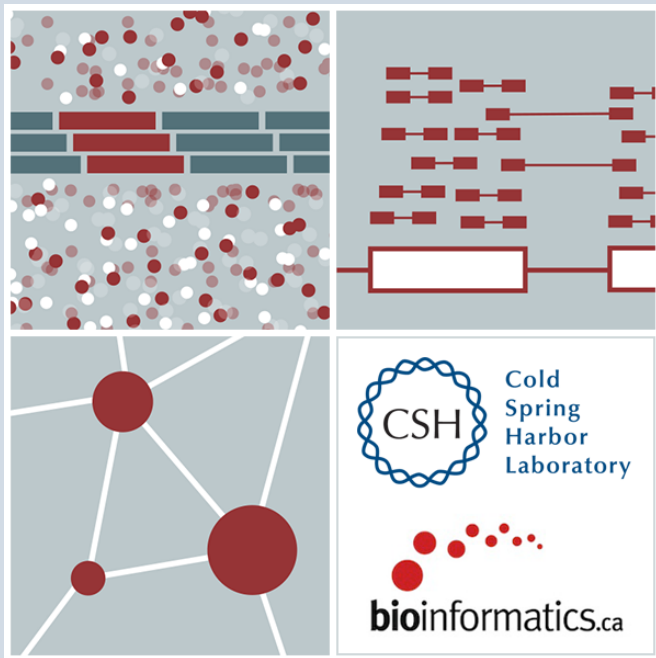
[Disclaimer](#)

Your fair dealing and other rights are in no way affected by the above.
This is a human-readable summary of the Legal Code (the full licence) available in the following languages:
[English](#) [French](#)

[Learn how to distribute your work using this licence](#)

Introduction to RNA sequencing (lecture)

Obi Griffith and Malachi Griffith
RNA-seq Analysis 2023. July 17-19, 2023



Learning objectives of the course

- **Module 1: Introduction to RNA Sequencing**
- Module 2: Alignment and Visualization
- Module 3: Expression and Differential Expression
- Module 4: Alignment Free Expression Estimation

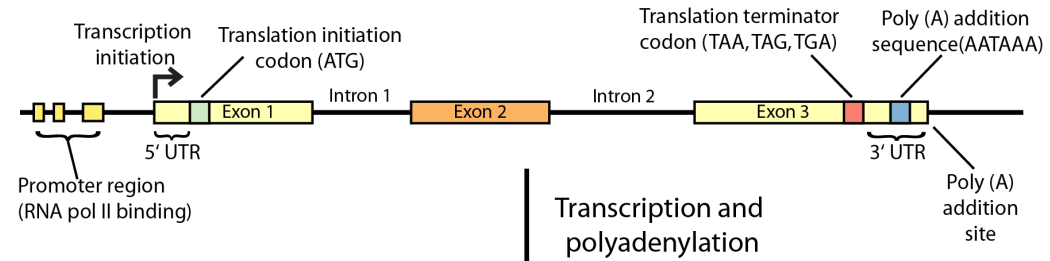
- Tutorials
 - Provide a working example of an RNA-seq analysis pipeline
 - Run in a ‘reasonable’ amount of time with modest computer resources
 - Self contained, self explanatory, portable

Learning objectives of module 1

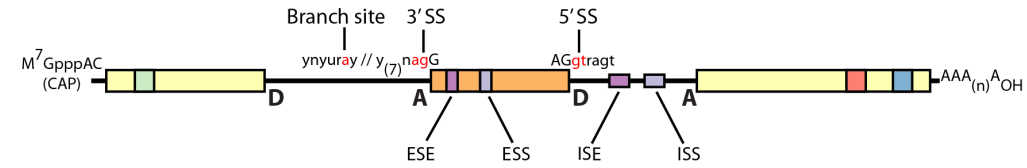
- Introduction to the theory and practice of RNA sequencing (RNA-seq) analysis
 - Background molecular biology
 - Challenges specific to RNA-seq
 - General goals and themes of RNA-seq analysis work flows
 - Common technical questions related to RNA-seq analysis
 - Introduction to the RNA-seq hands on tutorial

Gene expression

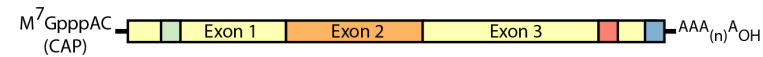
Double-stranded genomic DNA template



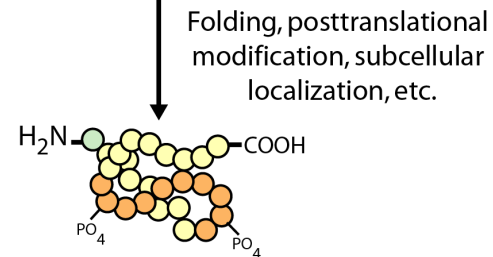
Single-stranded pre-mRNA (nuclear RNA)



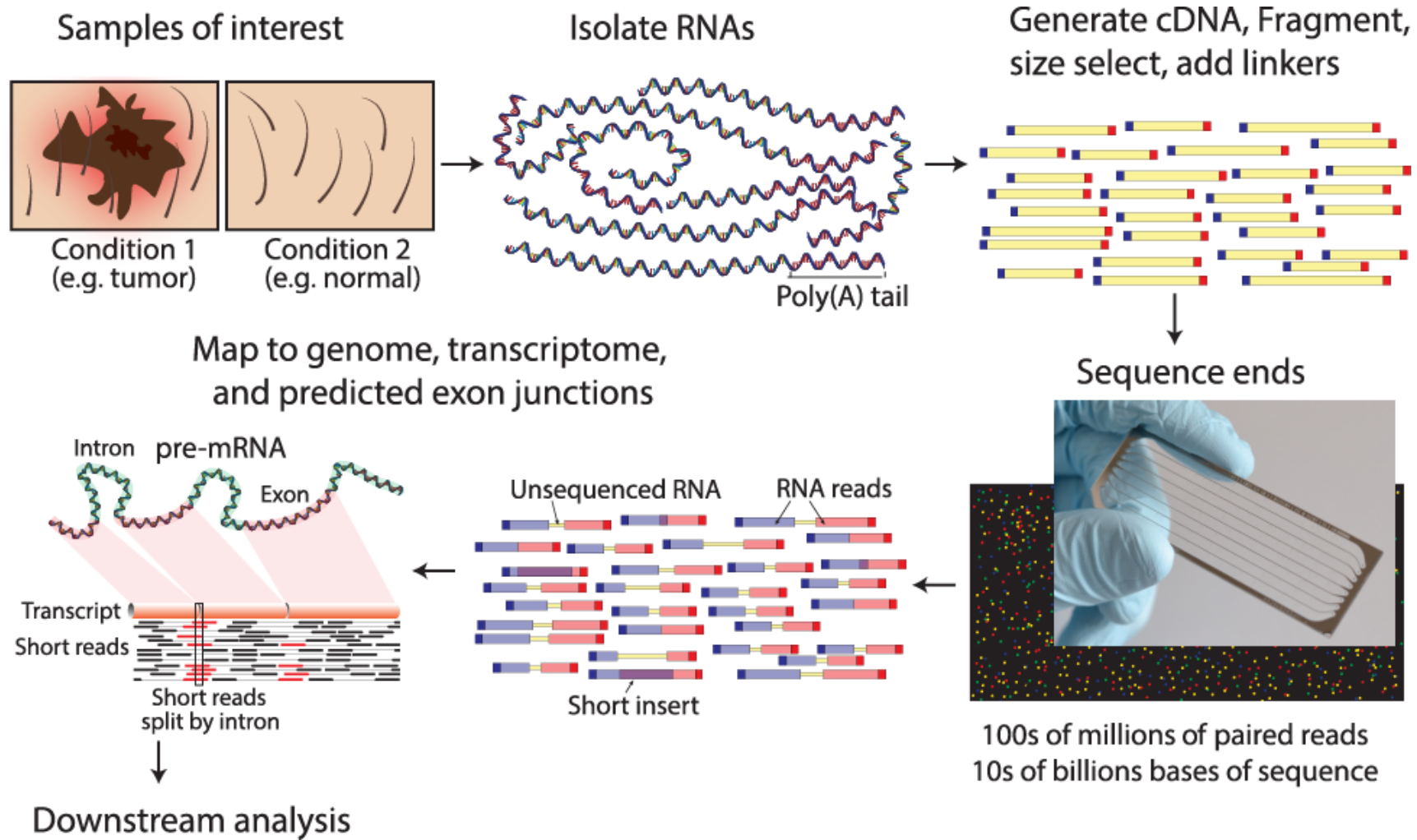
Mature mRNA



Protein (amino acid sequence)



RNA sequencing

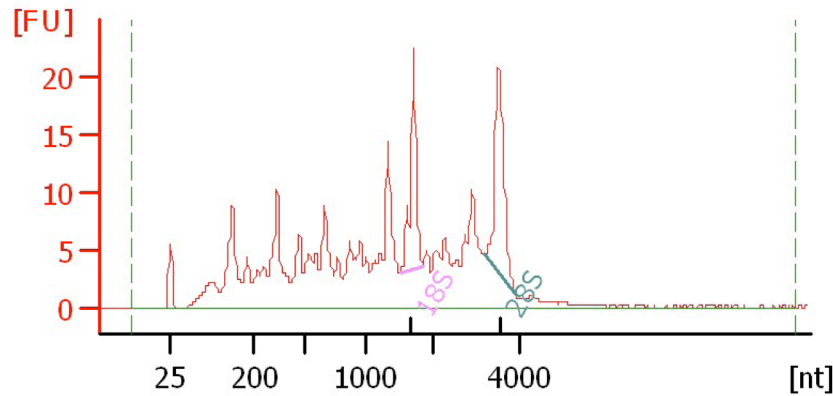


Challenges

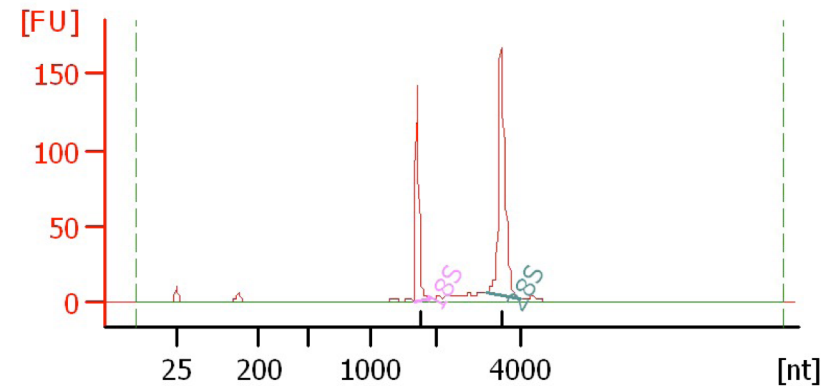
- Sample
 - Purity?, quantity?, quality?
- RNAs consist of small exons that may be separated by large introns
 - Mapping reads to genome is challenging
- The relative abundance of RNAs vary wildly
 - $10^5 - 10^7$ orders of magnitude
 - Since RNA sequencing works by random sampling, a small fraction of highly expressed genes may consume the majority of reads
 - Ribosomal and mitochondrial genes
- RNAs come in a wide range of sizes
 - Small RNAs must be captured separately
 - PolyA selection of large RNAs may result in 3' end bias
- RNA is fragile compared to DNA (easily degraded)

Agilent example / interpretation

- <https://goo.gl/uC5a3C>
- ‘RIN’ = RNA integrity number
 - 0 (bad) to 10 (good)



RIN = 6.0



RIN = 10

Design considerations

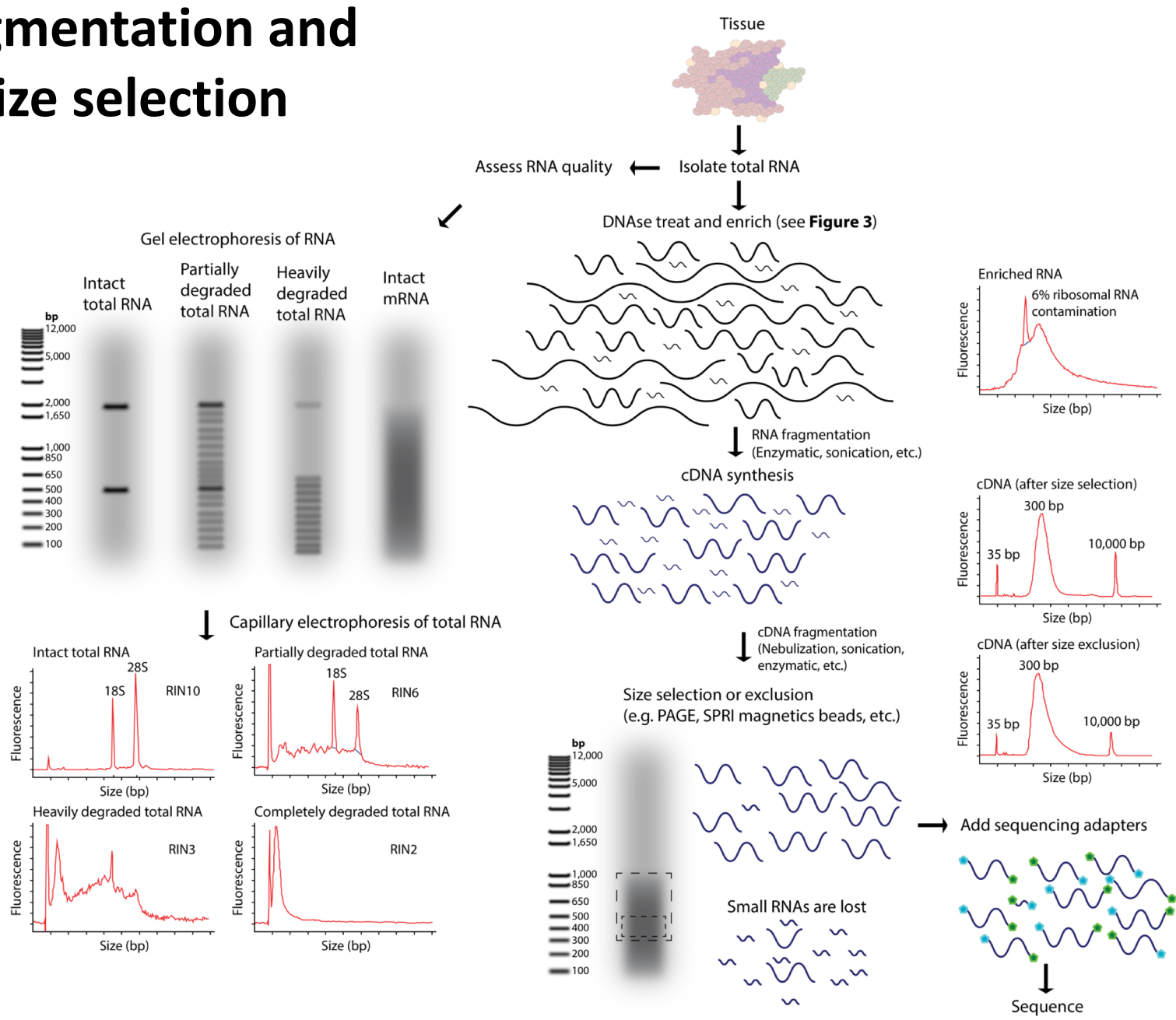
- Standards, Guidelines and Best Practices for RNA-seq
 - The ENCODE Consortium
 - Download from the Course Wiki
 - Meta data to supply, replicates, sequencing depth, control experiments, reporting standards, etc.
- <https://goo.gl/6LePBW>
- Several additional initiatives are underway to develop standards and best practices that cover many of these concepts. These include: the Sequencing Quality Control (SEQC) consortium, the Roadmap Epigenomics Mapping Consortium (REMC), and the Beta Cell Biology Consortium (BCBC).

There are many RNA-seq library construction strategies

- Total RNA versus polyA+ RNA?
- Ribo-reduction?
- Size selection (before and/or after cDNA synthesis)
 - Small RNAs (microRNAs) vs. large RNAs?
 - A narrow fragment size distribution vs. a broad one?
- Linear amplification?
- Stranded vs. un-stranded libraries
- Exome captured vs. un-captured
- Library normalization?

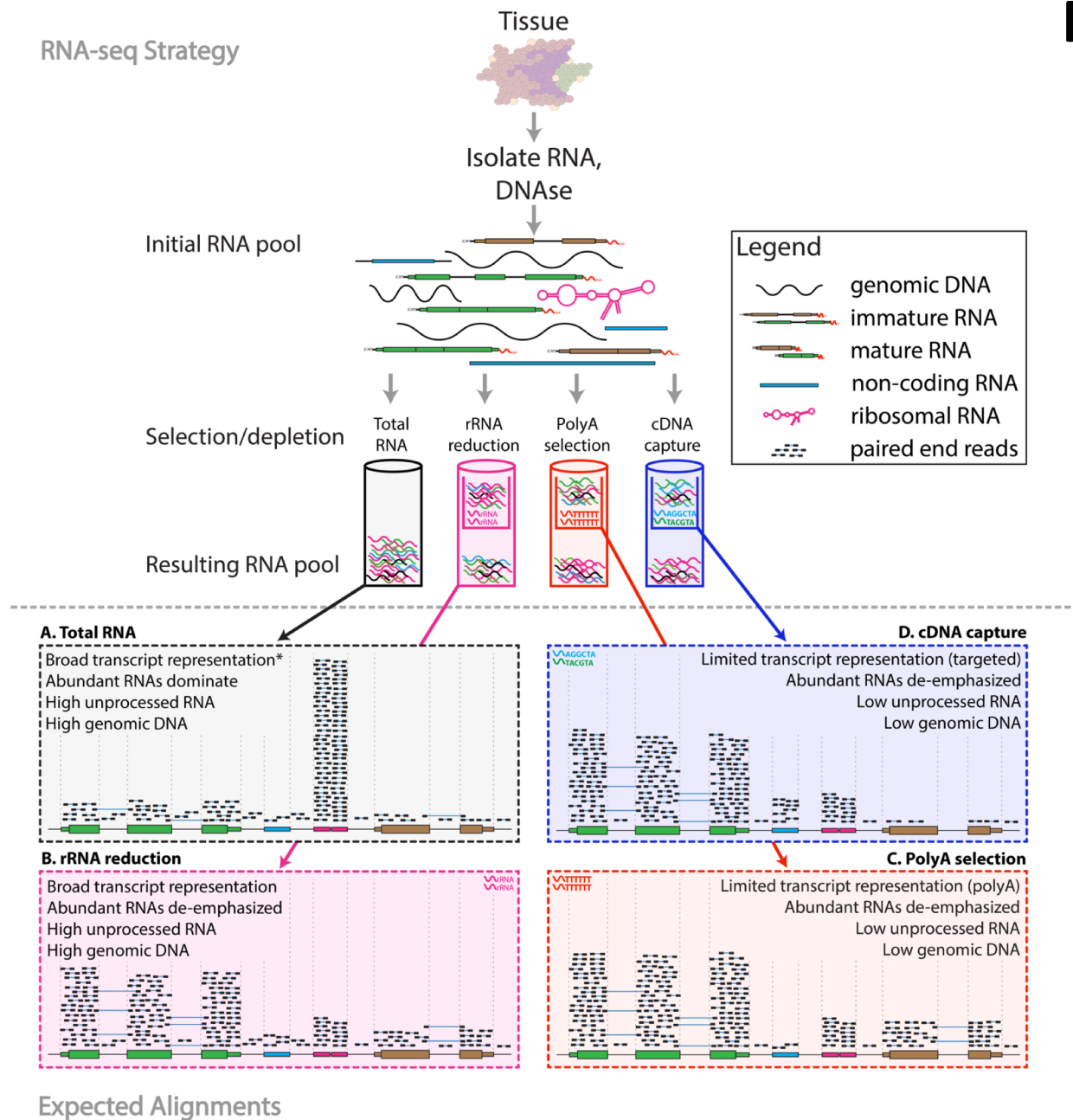
- These details can affect analysis strategy
 - Especially comparisons between libraries

Fragmentation and size selection



RNA sequence enrichment (selection/depletion)

RNA-seq Strategy

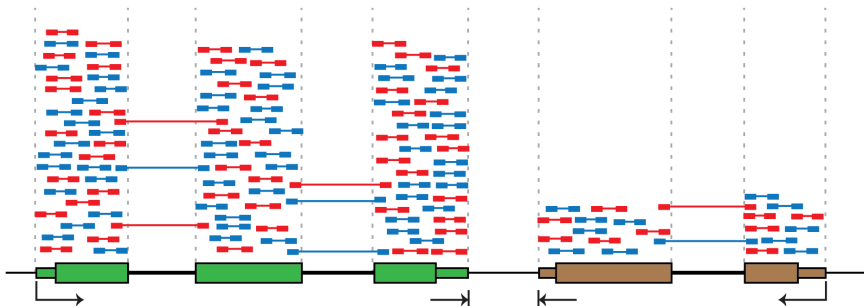


Stranded vs. unstranded

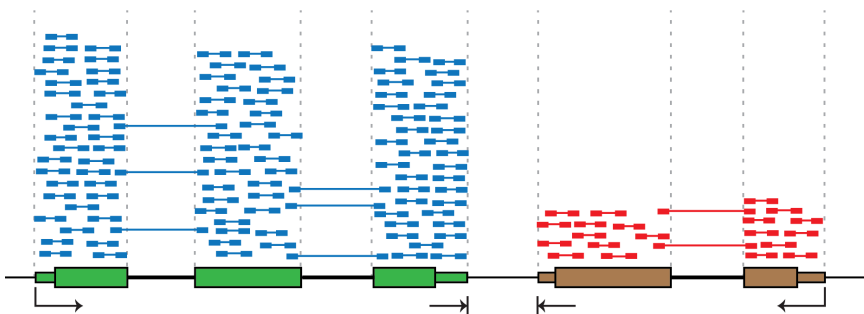
A. Depiction of cDNA fragments from an unstranded library

Legend

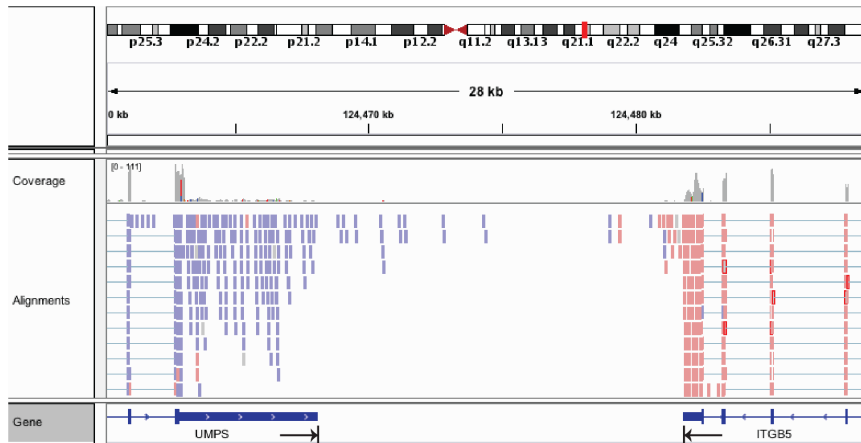
- Transcription start site and direction
- ⌞ PolyA site (transcription end)
- Read sequenced from positive strand (forward)
- Read sequenced from negative strand (reverse)



B. Depiction of cDNA fragments from a stranded library

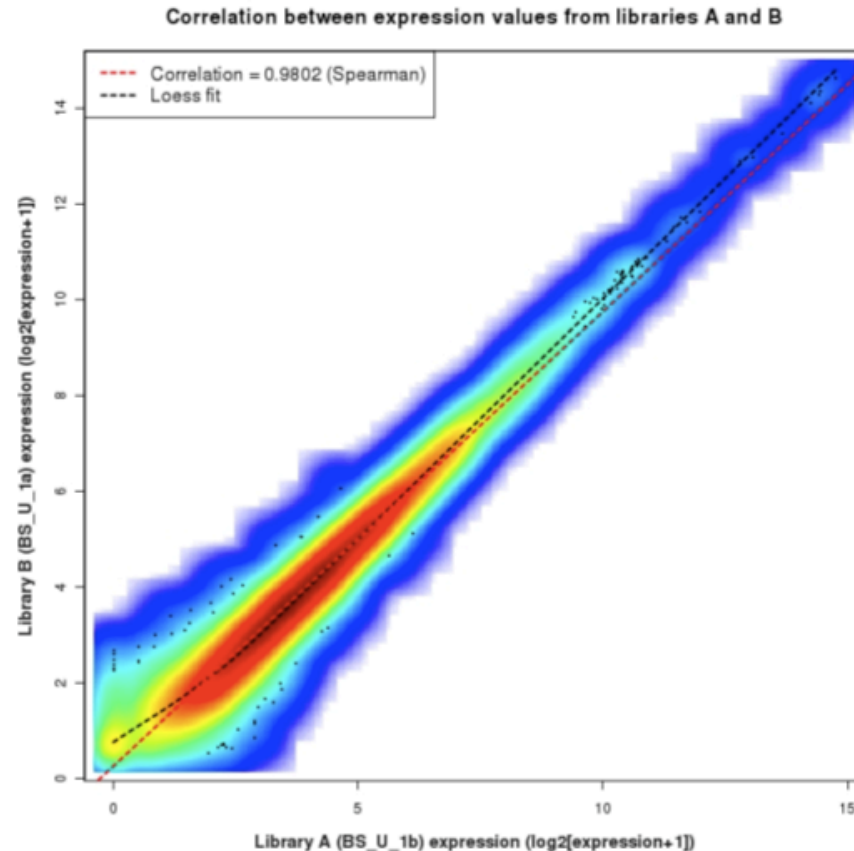


C. Viewing strand of aligned reads in IGV



Replicates

- Technical Replicate
 - Multiple instances of sequence generation
 - Flow Cells, Lanes, Indexes
- Biological Replicate
 - Multiple isolations of cells showing the same phenotype, stage or other experimental condition
 - Some example concerns/challenges:
 - Environmental Factors, Growth Conditions, Time
 - Correlation Coefficient 0.92-0.98



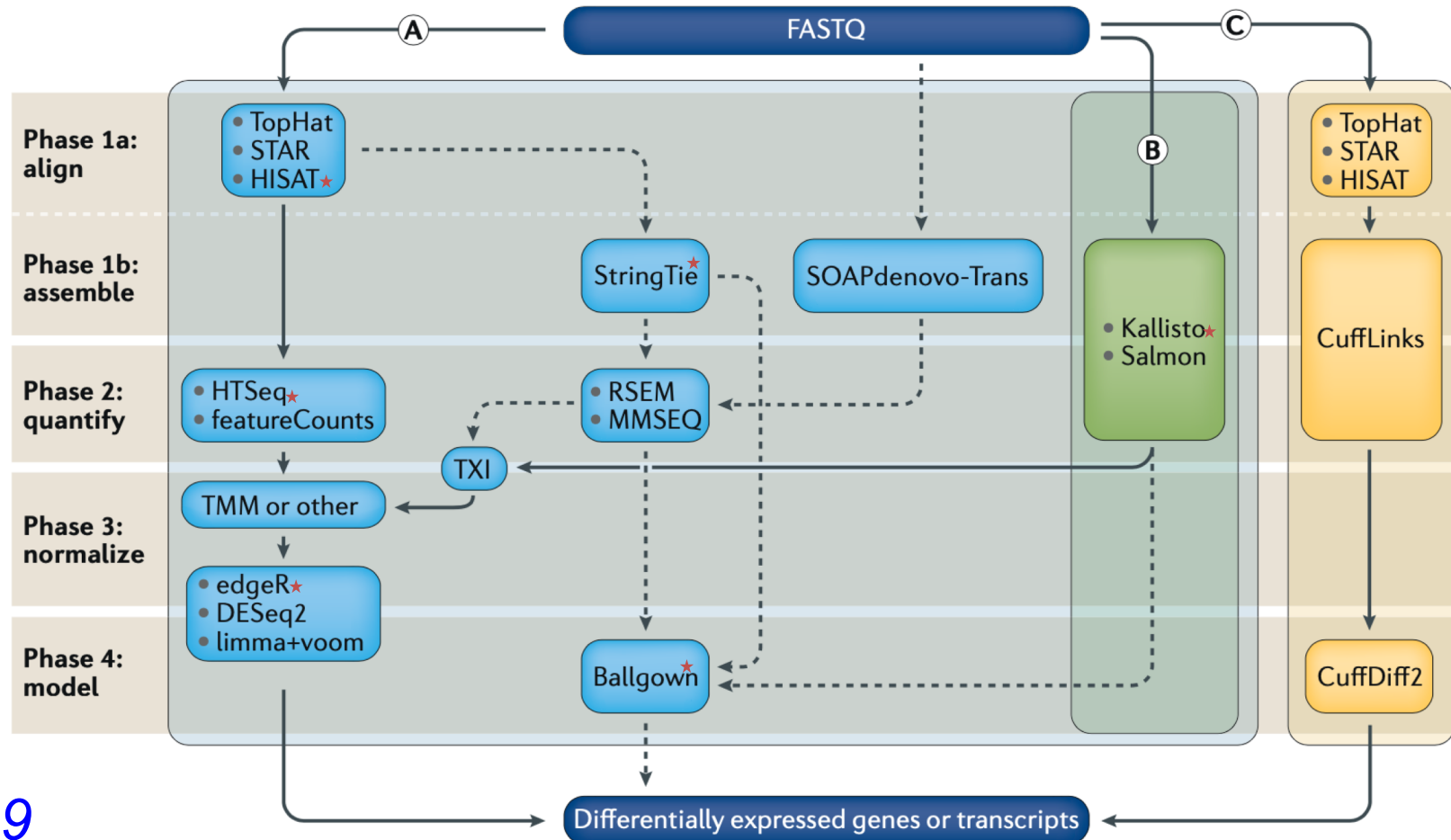
Common analysis goals of RNA-Seq analysis (what can you ask of the data?)

- Gene expression and differential expression
- Alternative expression analysis
- Transcript discovery and annotation
- Allele specific expression
 - Relating to SNPs or mutations
- Mutation discovery
- Fusion detection
- RNA editing

General themes of RNA-seq workflows

- Each type of RNA-seq analysis has distinct requirements and challenges but also a common theme:
 1. Obtain raw data (convert format)
 2. Align/assemble reads
 3. Process alignment with a tool specific to the goal
 - e.g. ‘cufflinks’ for expression analysis, ‘defuse’ for fusion detection, etc.
 4. Post process
 - Import into downstream software (R, Matlab, Cytoscape, Ingenuity, etc.)
 5. Summarize and visualize
 - Create gene lists, prioritize candidates for validation, etc.

Examples of RNA-seq data analysis workflows for differential gene expression



★ Covered in this course

[Stark et al. 2019](#)

Discussion of bulk vs single cell RNA-seq

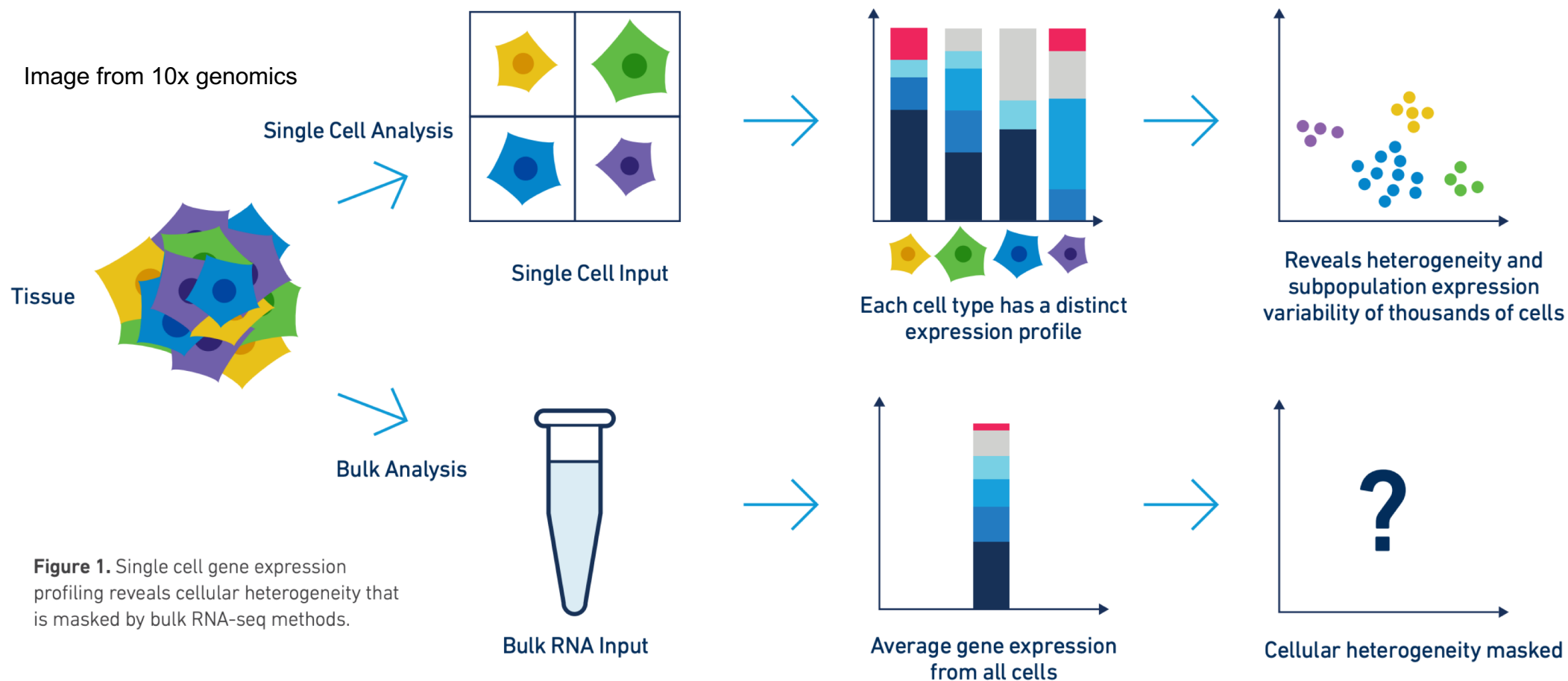


Figure 1. Single cell gene expression profiling reveals cellular heterogeneity that is masked by bulk RNA-seq methods.

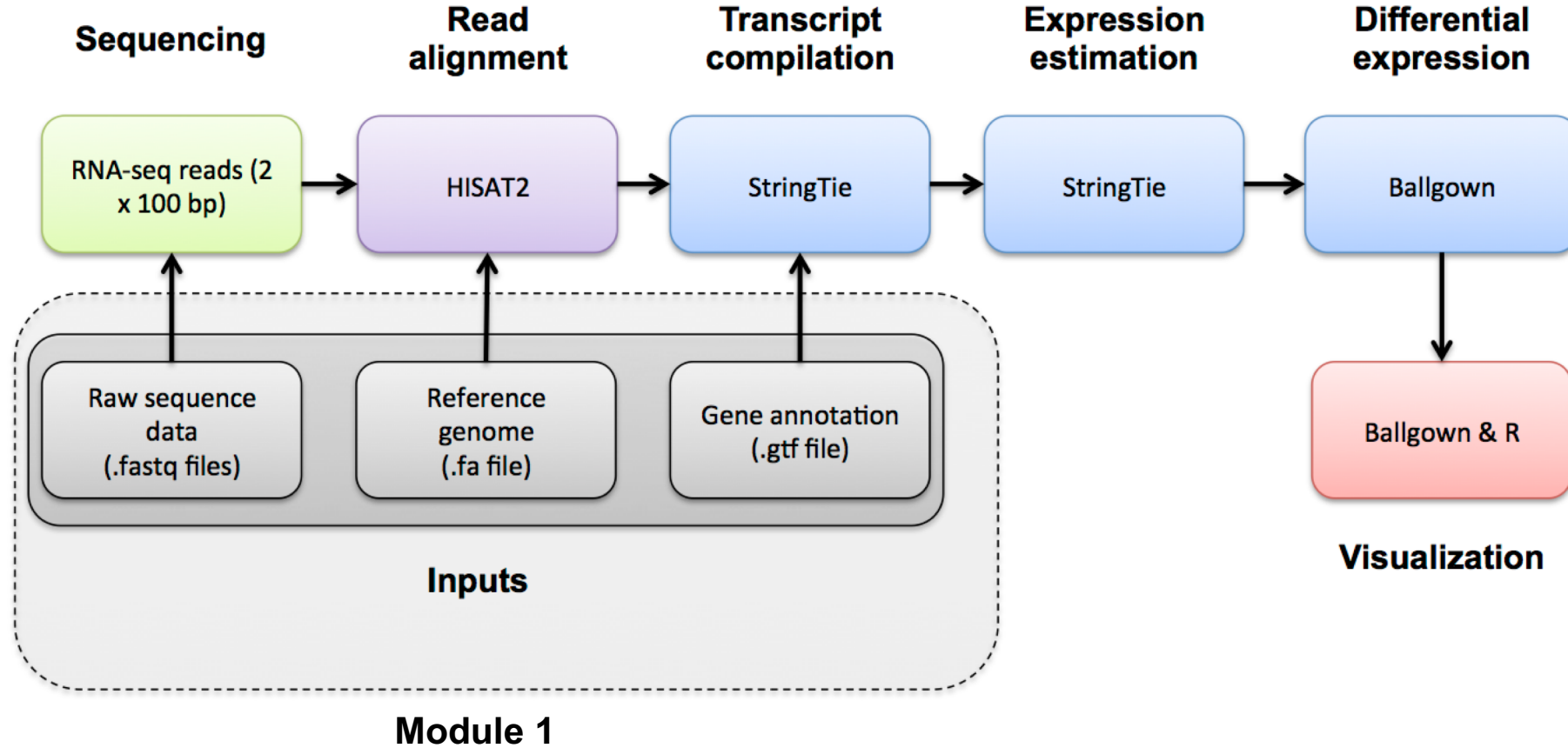
Factors to compare: Cost, complexity of library prep, complexity of analysis, qualitative and quantitative differences in richness of information obtained.

Common questions (and answers)

- [Supplementary Table 7](#)
- Malachi Griffith*, Jason R. Walker, Nicholas C. Spies, Benjamin J. Ainscough, Obi L. Griffith*. 2015. Informatics for RNA-seq: A web resource for analysis on the cloud. 11(8):e1004393. 2015.
 - <http://journals.plos.org/ploscompbiol/article?id=10.1371/journal.pcbi.1004393>

Introduction to tutorial (Module 1)

HISAT2/StringTie/Balgon RNA-seq Pipeline



We are on a Coffee Break & Networking Session

Workshop Sponsors:



Canadian Centre for
Computational
Genomics



HPC4Health



GenomeCanada